

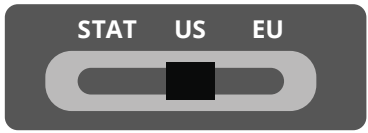
Elite Series 2018+ Ford Mustang Combination Lamp Installation Guide



11. Using the integrated switch (located inside the main connector on the back of the fog lamp housing) select your desired turn signal blink rate.

- **STAT:** Static, non-sequential turn signal
- **US:** Sequential, slower speed to match tail lights
- **EU:** Sequential, faster speed to match export model blink rates

Use the included small screwdriver to select desired option. The factory connector will seal up this part of the housing when installed.



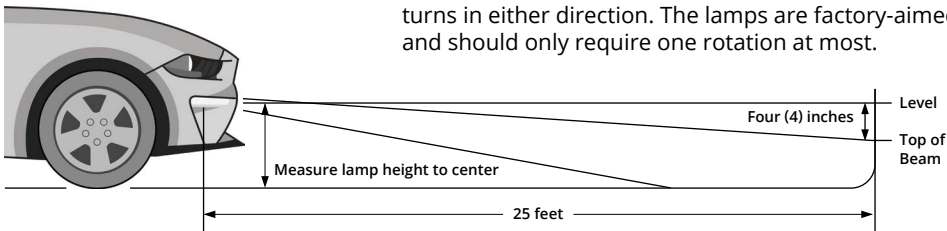
12. While holding the bumper cover in front of the vehicle, plug in the fog lamp connectors and place the bumper cover back onto the locators. Please note that the lower splash guard should be on top of the chin spoiler.

13. Gently reinstall the push pins into each fender.



14. Test function and aim fog lamps. To do so, park 25 feet from a wall, on a flat surface. The top of the fog lamp beam pattern should be four inches lower than the height of the lamp on your vehicle. To adjust, locate the 8mm hex head bolt located on the back of the fog lamp. Rotate this bolt counter clockwise to aim downward, and counter-clockwise to aim upward. Make sure to count the number of rotations.

NOTE: Do not rotate this bolt more than three full turns in either direction. The lamps are factory-aimed and should only require one rotation at most.



15. When desired aiming is reached, complete the install process by reversing steps one through five. First, secure the bumper cover to the core support and lower splash guard using the original screws. Then reinstall the inner fender liner and upper valance using the original push rivets.

Please contact **Diode Dynamics** should you have any questions about the installation or wiring process, at **314-205-3033** (10a-5p CST) or **contact@diodedynamics.com**.

This installation guide is for the following SKUs:

DD5132 Ford Mustang 2018 Elite Foglamp White (set)

DD5133 Ford Mustang 2018 Elite Foglamp Yellow (set)



Thank you for your purchase of Elite Series Combination Lamps for your 2018+ Mustang! Designed for perfect fitment, these LEDs illuminate in a cool white for your parking lights and DRL, and add a sequential turn signal as well as a modern startup sequence any time the vehicle is unlocked.



Tools Needed: Plastic trim removal tool, 7mm socket, 8mm socket, 7/32" socket, 10mm socket, and small screwdriver (included in kit)



1. Using a plastic trim removal tool, remove the eight push rivets on the upper valance. Then, gently pry them off and remove the upper valance.



2. Using a plastic trim removal tool, remove the three push rivets holding the inner fender liner in place. Do this on both sides of the vehicle.



3. Using a 7mm socket, remove the fifteen lower screws holding the bumper cover to the lower splash guard.

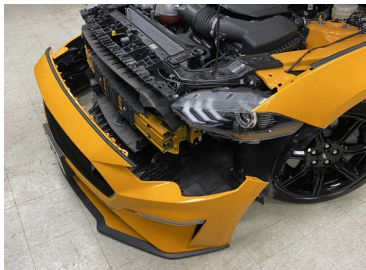


4. Using a 8mm and a 7/32" socket, remove the eight upper bolts securing the bumper cover to the core support.

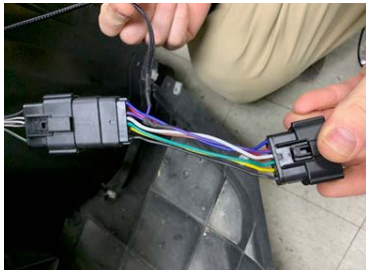


5. Peel back the inner fender and use a 10mm socket to remove the two nuts securing the bumper cover to the fender. Do this on both sides of the vehicle.

NOTE: There is a push pin in between the two nuts. This push pin will keep the bumper cover attached to the fender when the nuts are removed. Disconnect the bumper cover by pulling down and forward to release the push pin.

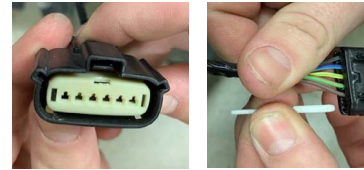


6. Remove the bumper cover. The cover will need to be lifted and rotated slightly upward to fully remove it. Disconnect the connectors from the factory fog lamps and set the cover aside.



7. Unplug the factory headlight connector and install the new DRL harness provided in the kit. Then plug the harness back into the headlight. Do this on both sides of the vehicle.

8. You should find one extra wire hanging from the DRL harness. This wire will have a braided loom covering. The end of this wire has a metal terminal, which needs to be inserted into the fog lamp connector, as follows:



A. Locate the fog lamp connector. Remove the white retaining clip, by lifting the tabs on each side using the provided small screwdriver.

B. Remove the white sealing plug from pin 6, by prying up on the release tab from the front, while pulling the sealing plug from the back. Set aside.



NOTE: If the white sealing plug is not present, you may need to remove the knockout from that pin slot. Access the knockout by gently prying off the back plate of the connector with the small screwdriver. Remove the knockout by pushing it out from the back. Reinstall the back plate onto the connector.



C. Align the terminal from the DRL harness, placing it into position 6 of the fog lamp connector. Ensure it is rotated to match the other connectors, with thick part at the bottom. It should clip into place when fully seated.



D. Reinstall the retaining clip. You should not need to force it into position. If it does not clip into place, remove the clip and inspect the terminals, making sure they are correctly aligned.

Repeat steps A-D on the other side of the vehicle.



9. Remove both factory fog lamps. Using a 7mm socket, remove the three screws holding the factory fog lamps to the bumper cover and set aside.

The factory screws will be reused.



10. Install your new Elite Series combination lamps into the factory positions. Left and Right sides are displayed on the outer lens and on the backside of the housings for easy identification. Reuse the factory 7mm screws to secure the new lamps into place.

See back for further instructions.